

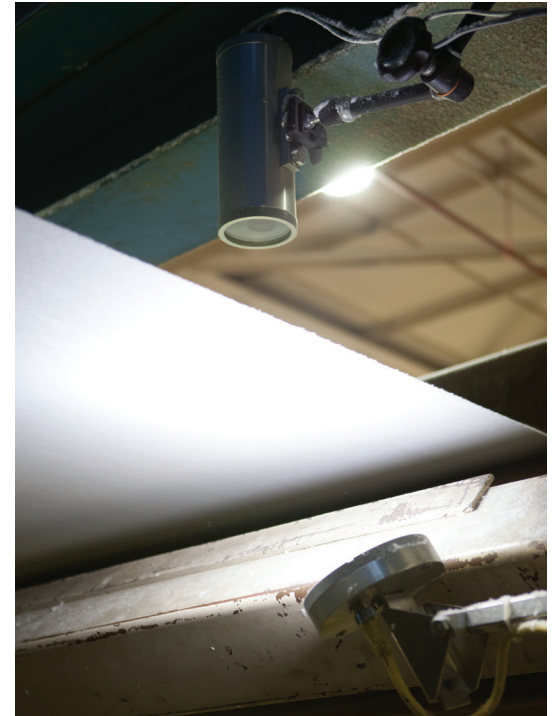
PULPiNSPECTOR

Custom Pulp Solutions

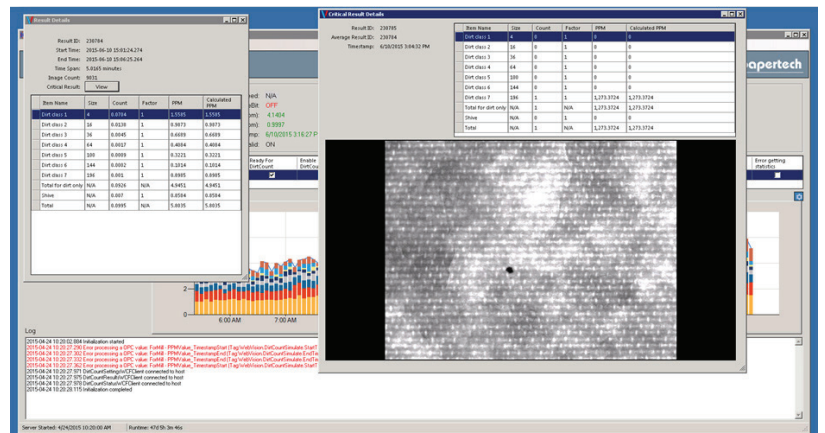
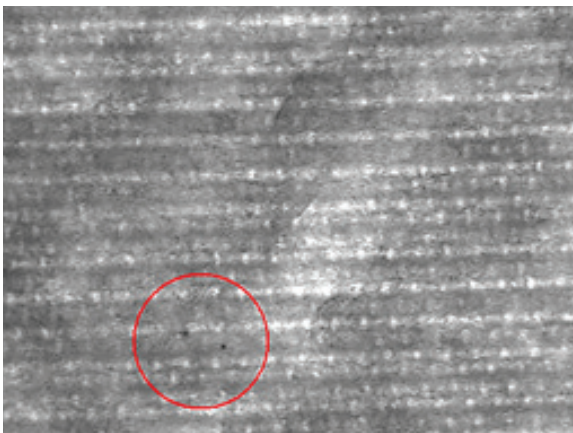
Papertech has recently introduced an online pulp dryer dirt count measurement camera system called PulpInspector. An alternative to the labour intensive off-line manual measurement method currently used by many producers, PulpInspector's high resolution cameras continuously analyze pulp quality for dirt, shives and any other non-desirable contaminants, such as metal. The user-friendly interface allows operators to continuously see the PPM dirt count, and to quickly review weeks of dirt count history and trends.

Features

- Software recognizes and reports all dirt in PPM (parts per million) and continuously measures, either in one section of the pulp sheet, or all the way across for a complete 100% sheet inspection.
- Any dirt count changes are immediately detected and alarmed, providing operators with the tools they need to react to process changes.
- Easy installation on any pulp dryer, and can be used on a range of pulp brightness.
- PulpInspector can also be readily interfaced with various QCS/DCS systems.
- PulpInspector uses proven TotalVision GigE high-definition cameras and WebLED lights.



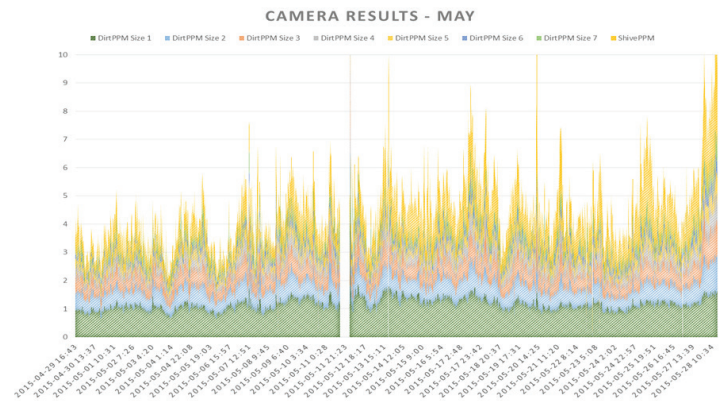
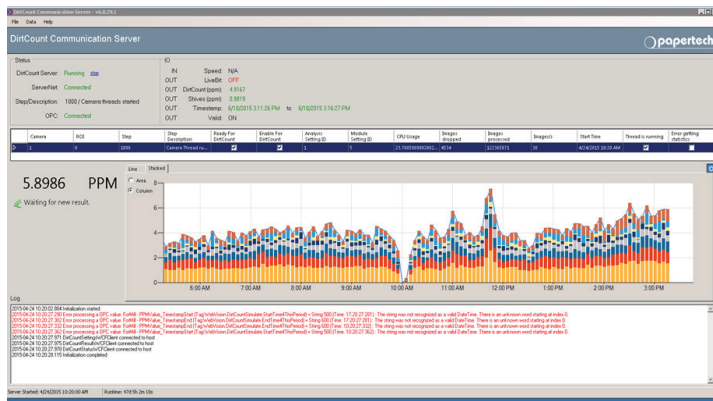
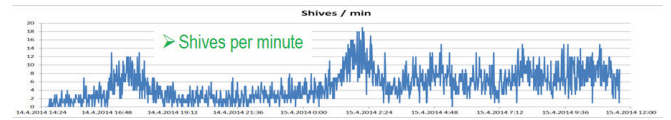
High output strobing LED transmission lighting is used to detect dirt, shives, and other impurities in the sheet.



PulpInspector has the ability to measure dirt down to 0.2mm, 0.04mm² while ignoring the pulp surface pressing pattern.

Online Results

- Shows hour by hour history of dirt count in PPM.
- Shows day to day history of dirt count in PPM.
- Shows size distribution of dirt (user defined).
- Shows 100 images archived.
- Can bring up any captured image for further analysis.
- Software ignores the pulp surface pressing pattern.
- Shows the most severe, or largest, defect found in user defined time period.



PulpInspector cameras can be synchronized with other monitoring and inspection cameras on the machine to identify the origin of defects in the sheet.

Contact Us

If you think your company could benefit from the addition of a PulpInspector system, or you have further questions, please contact us at the address below.

